

# Where Job Seekers & Employers Meet

For all your employment or training needs contact one of the WorkOne centers now! [www.gotoworkonenw.com](http://www.gotoworkonenw.com)



**WorkOne Gary**  
3522 Village Court • Gary, IN  
219-981-1520 or 981-4100 Fax: 219-981-4121  
Hours of operation:  
Mon, Tues, Wed & Fri - 8:00am – 4:30pm  
Thurs - 10:00am – 4:30pm



**WorkOne Hammond**  
5265 Hohman Avenue • Hammond, IN  
219-933-8332 Fax: 219-933-8370  
Hours of operation:  
Mon, Tue, Thurs & Fri - 8:00am – 4:30pm  
Wed - 10:00am – 4:30pm



**WorkOne Knox**  
1913 S Heaton St. Suite B • Knox, IN  
574-772-6882 Fax: 574-772-6899  
Hours of operation:  
Mon, Tues, Wed & Fri - 8:00am – 4:30pm  
Thurs - 10:00am – 4:30pm



**WorkOne LaPorte**  
Sagamore Center • 300 Legacy Plaza West  
LaPorte, Indiana 46350-5876  
219-362-2175 Fax: 219-362-1198  
Hours of operation:  
Mon, Tues, Wed & Fri - 8:00am – 4:30pm  
Thurs - 10:00am – 4:30pm



**WorkOne Michigan City**  
302 W. 8th Street  
Michigan City, Indiana 46360  
219-809-0575 Fax: 219-809-0577  
Hours of operation:  
Mon, Wed & Fri - 8:00am – 4:30pm



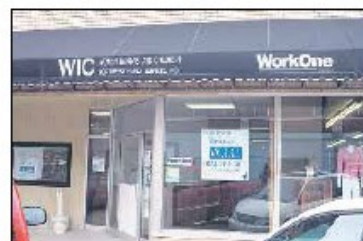
**WorkOne Morocco**  
4117 S. 240 West, Ste. 400 • Morocco, IN  
800-661-2258 Fax: 219-285-2213  
Hours of operation:  
Mon, Tues & Wed - 8:00am – 4:30pm



**WorkOne Portage**  
AmeriPLEX Commercial Park  
1575 Adler Circle, Ste. A • Portage, IN  
219-762-6592 Fax: 219-762-1052  
Hours of operation:  
Mon, Tues, Thurs & Fri - 8:00am – 4:30pm  
Wed - 10:00am – 4:30pm



**WorkOne Rensselaer**  
116 N. Van Rensselaer Street • Rensselaer, IN  
219-866-4330 Fax: 219-866-2746  
Hours of operation:  
Mon, Tues, Wed & Fri - 8:00am – 4:30pm  
Thurs - 10:00am – 4:30pm



**WorkOne Winamac**  
123 N. Market Street, Ste. 2 • Winamac, IN  
574-946-6300 Fax: 574-946-3628  
Hours of operation:  
Tues & Wed - 8:00am – 4:30pm (EST)

Oversight of Region 1 WorkOne System is provided  
by the Northwest Indiana Workforce Board  
[www.gotoworkonenw.com](http://www.gotoworkonenw.com)

**WorkOne**  
Northwest Indiana