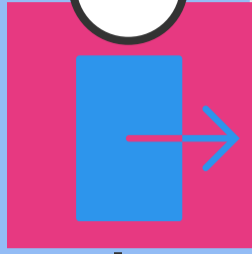


Northwest Indiana Labor Market Highlights

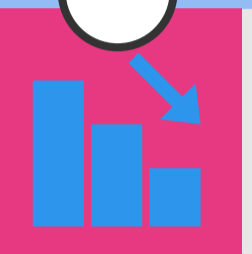
February 2018

Latest market data figures were released by the Department of Workforce Development for December 2017 and reflect changes since November 2017.

DECEMBER 2017 DATA



Unemployment Rate remains the same: **4.4%**



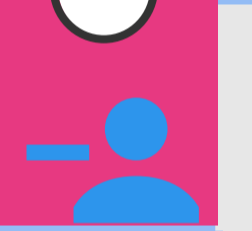
Labor Force decreased by **3,126**



Employment decreased by **3,040**

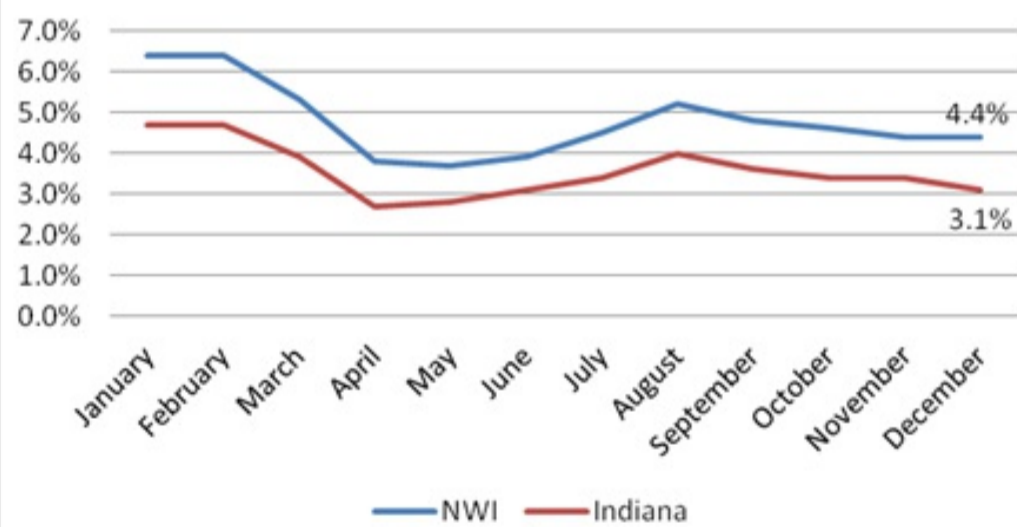


Largest Gain No gains in December 2017

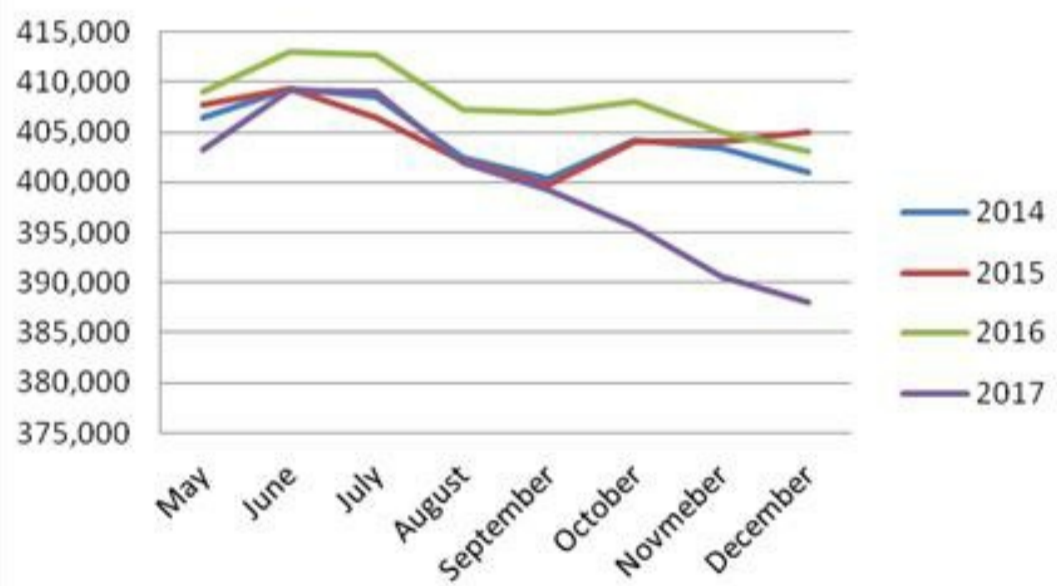


Largest Decline Construction Industry: **-1,000 jobs**

Unemployment Rate 2017
Indiana vs NWI



NWI Labor Force Size



The latest data for Northwest Indiana (December 2017) shows a decrease in the civilian labor force and a decrease in employment. The unemployment rate is unchanged from November and is still at 4.4%. Most other Economic Growth Regions or EGRs in the state experienced further drops in unemployment rate, however, ours is still the highest in the state.

While the unemployment rate held steady, the labor force continued to drop. Between November and December, the Northwest Indiana region had another 3,126 people leave the labor force. Compared to a year ago, our region's labor force is down by 14,990.

Until next month,

Linda

Linda Woloshansky
President & CEO
Center of Workforce Innovations and staff to
the Northwest Indiana Workforce Board

	DEC-17	NOV-17	DEC-16	CHANGE	
				Month	Year
LABOR FORCE	388,103	391,229	403,093	-3,126	-14,990
EMPLOYED	370,947	373,987	380,732	-3,040	-9,785
UNEMPLOYED	16,156	17,242	22,361	-86	-5,205