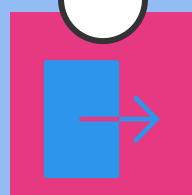


Northwest Indiana Labor Market Highlights

April 2018

Latest market data figures were released by the Department of Workforce Development for February 2018 and reflect changes since January 2018.

FEBRUARY 2018 DATA



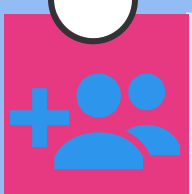
Unemployment Rate remained the same at 5.0%



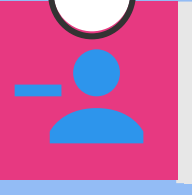
Labor Force increased by **6,383**



Employment increased by **5,043**

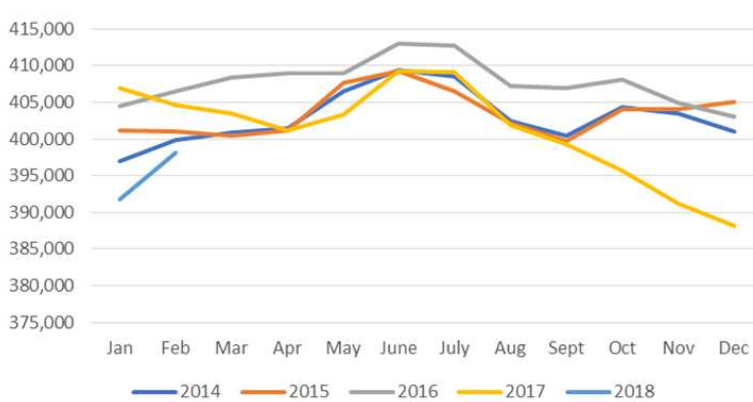


Largest Gain Education by **+800** jobs

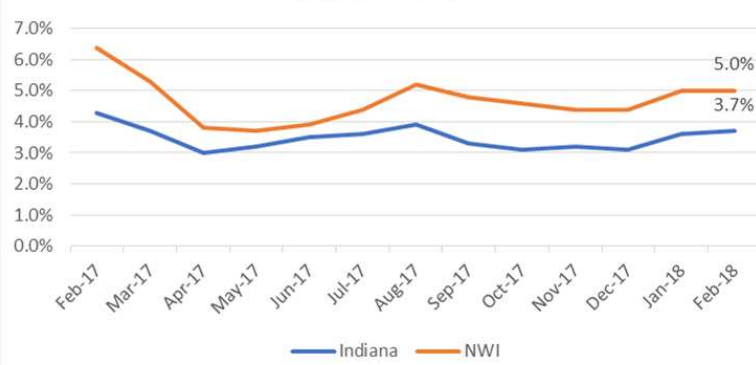


Largest Decline Retail Trade: **-800** jobs

NWI Labor Force Size



Unemployment Rate 2017-2018
Indiana vs. NWI



	FEB-18	JAN-17	DEC-17	FEB-17	CHANGE	
					Month	Year
Labor Force	398,101	391,718	388,103	404,654	6,383	-6,553
Employed	377,246	372,203	370,947	378,592	5,043	-1,346
Unemployed	20,855	19,515	17,156	26,062	1,340	-5,207

The latest data for Northwest Indiana (February 2018) shows an increase in the civilian labor force and an increase in employment. The unemployment rate, however, remained the same at 5.0%.

After an employment drop this past December and January, we saw an upswing in February which is not an unusual trend. However this year, the numbers increased four times as much as last year. Most of the gains in employment were in trade, transportation, and utilities at 1,100, construction at 700, professional and business services at 600 and manufacturing at 400.

Until next month,

Linda

Linda Woloshansky
President & CEO
Center of Workforce Innovations and staff to
the Northwest Indiana Workforce Board

