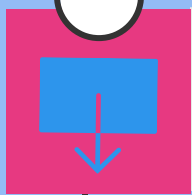


# Northwest Indiana Labor Market Highlights

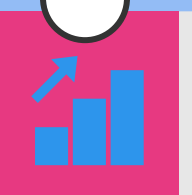
May 2018

Latest market data figures were released by the Department of Workforce Development for March 2018 and reflect changes since February 2018.

MARCH 2018 DATA



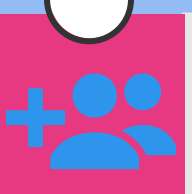
**Unemployment Rate** decreased to **4.4%**



**Labor Force** increased by **4,511**



**Employment** increased by **6,451**

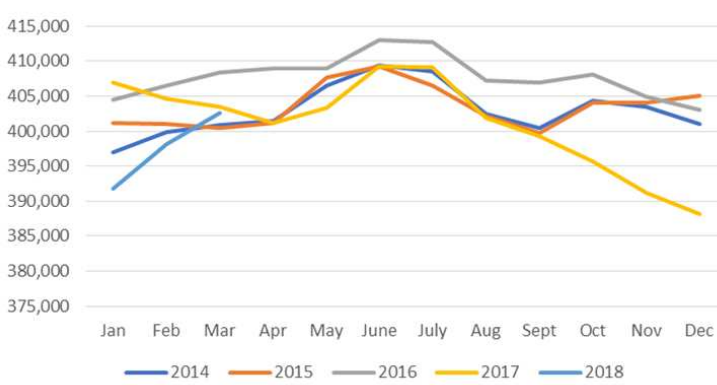


**Largest Gain** Primary Metal Manufacturing  
**+1,000 jobs**

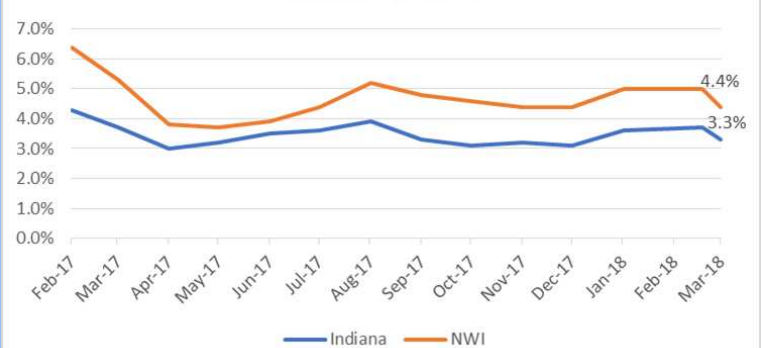


**Largest Decline** Professional & Business Services  
**-200 jobs**

NWI Labor Force Size



Unemployment Rate 2017-2018  
Indiana vs. NWI



	Mar - 18	Feb - 18	Jan - 18	Mar - 17	CHANGE	
					Month	Year
Labor Force	402,612	398,101	391,718	403,420	4,511	-808
Employed	383,697	377,246	372,203	382,057	6,451	1,640
Unemployed	18,915	20,855	19,515	21,363	-1,940	-2,448

The latest data for Northwest Indiana (March 2018) shows an increase in the civilian labor force and an increase in employment. The unemployment rate for Northwest Indiana dropped by 0.6 percentage points, slightly more than the state's 0.4 percentage point decrease.

Let's look at the state. Overall, Indiana's unemployment rate has decreased 7.4 percentage points since July 2009 (the low point of employment), which ranks 4th in the U.S. Indiana's state's labor force participation rate has outperformed the national average for 46 months in a row. The state's rate is currently 63.8% vs 62.9% for national. Indiana Private Sector jobs have grown 27,300 over the year.

Until next month,

*Linda*

Linda Woloshansky  
President & CEO  
Center of Workforce Innovations and staff to  
the Northwest Indiana Workforce Board