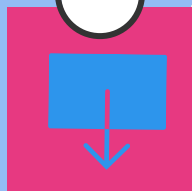


Northwest Indiana Labor Market Highlights

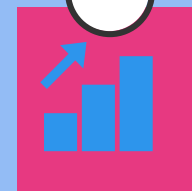
June 2018

Latest market data figures were released by the Department of Workforce Development for April 2018 and reflect changes since March 2018.

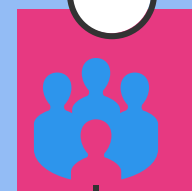
APRIL 2018 DATA



Unemployment Rate decreased to **3.7%**



Labor Force increased by **2,936**



Employment increased by **5,481**

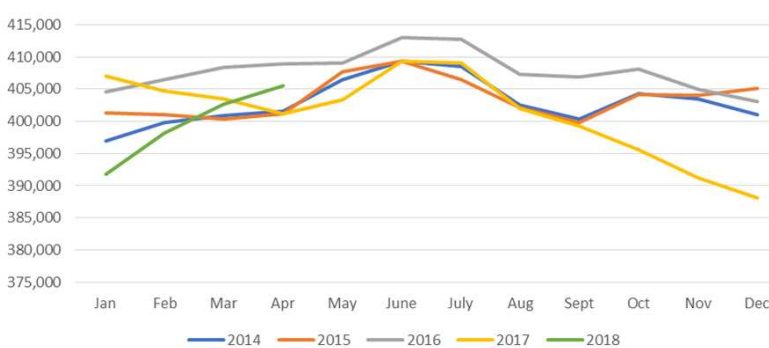


Largest Gain Mining, Logging, and Construction
+1,600 jobs

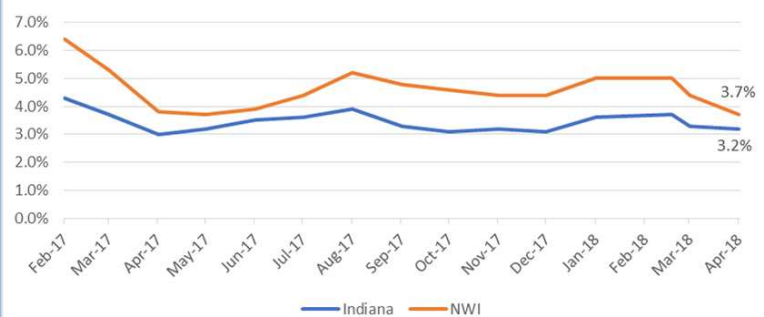


Largest Decline General Medical and Surgical Hospitals
-100 jobs

NWI Labor Force Size



Unemployment Rate 2017-2018
Indiana vs. NWI



	Apr - 18	Mar - 18	Feb - 18	Apr - 17	Change	
					MONTH	YEAR
Labor Force	405,548	402,612	398,101	401,197	2,936	4,351
Employed	389,178	383,697	377,246	385,927	5,481	3,251
Unemployed	15,863	18,915	20,855	15,270	-3,052	593

The latest data for **Northwest Indiana** (April 2018), once again, shows an increase in the civilian labor force and an increase in employment. The unemployment rate for Northwest Indiana dropped by 0.7 percentage points, more than three times that of the state's 0.2 percentage point decrease.

Between March 2018 and April 2018, the Northwest Indiana region labor force increased by 2,936 workers; that's nearly 1,500 less than between February 2018 and March 2018. In comparison to a year ago, the labor force population in the region has risen by 4,351.

In Indiana overall, unemployment rate has decreased 7.4 percentage points since July 2009 (the low point of employment), which ranks 4th in the U.S. Indiana's state's labor force participation rate has outperformed the national average for 48 months in a row. The state's rate is currently 64.3 vs 62.7% for national. Indiana Private Sector jobs have grown 26,600 over the year.

Until next month,

Linda

Linda Woloshansky
President & CEO

Center of Workforce Innovations and staff to
the Northwest Indiana Workforce Board