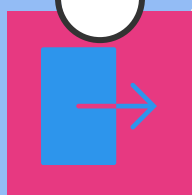


Northwest Indiana Labor Market Highlights

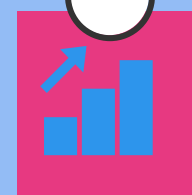
June 2018

Latest market data figures were released by the Department of Workforce Development for May 2018 and reflect changes since April 2018.

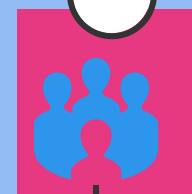
MAY 2018 DATA



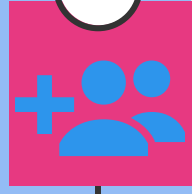
Unemployment Rate decreased to **3.7**



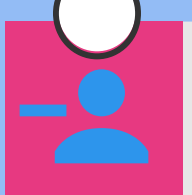
Labor Force increased by **3,584**



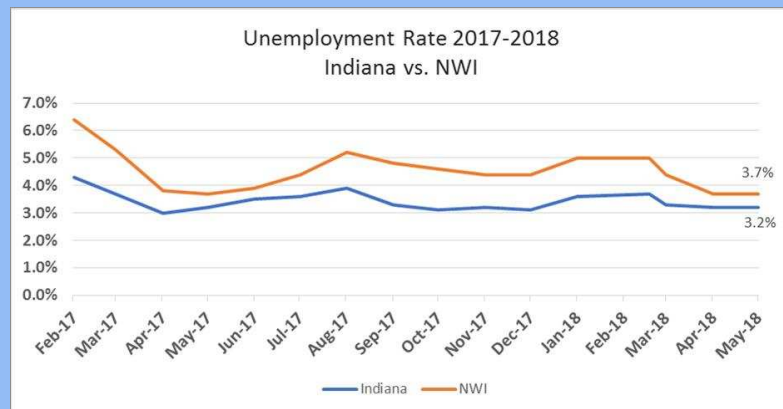
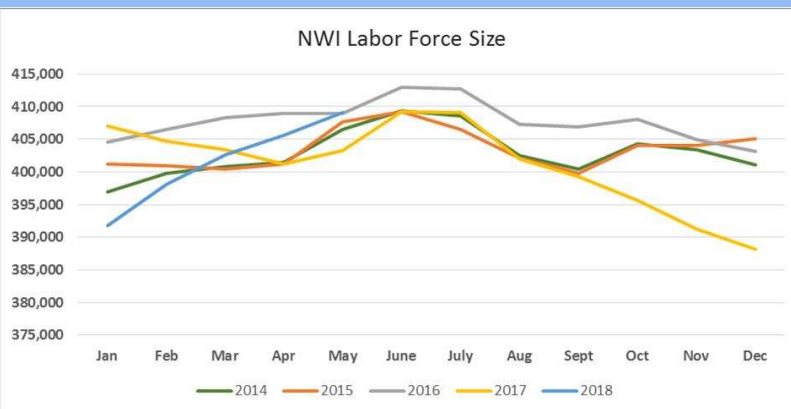
Employment increased by **2,975**



Largest Gain Trade, Transportation, and Utilities
+1,200 jobs



Largest Decline General Medical and Surgical Hospitals
-100 jobs



	May - 18	Apr - 18	Mar - 18	May - 17	CHANGE	
					Month	Year
Labor Force	409,132	405,548	402,612	403,326	3,584	5,806
Employed	392,153	389,178	383,697	388,494	2,975	3,659
Unemployed	16,979	15,863	18,915	14,832	1,116	2,147

The latest data for **Northwest Indiana** (May 2018) shows an increase in the civilian labor force and an increase in employment. The unemployment rate for both NWI and Indiana remained the same as the previous month – 3.7% and 3.2%, respectively.

Between April 2018 and May 2018, the Northwest Indiana Region labor force increase by 3,584 workers – 648 workers more than between March 2018 and April 2018. In comparison to a year ago, the labor force population in the region has risen by 5,806 workers.

In **Indiana** overall, unemployment rate has decreased 7.4 percentage points since July 2009 (the low point of employment), which ranks 4th in the U.S. Indiana's state's labor force participation rate has outperformed the national average for 48 months in a row. The state's rate is currently 64.3 vs 62.7% for national. Indiana Private Sector jobs have grown 26,600 over the year.

Until next month,
Linda

Linda Woloshansky
President & CEO
Center of Workforce Innovations and staff to
the Northwest Indiana Workforce Board

